

Bharati Vidyapeeth's College of Pharmacy

Sector-8, CBD Belapur, Navi Mumbai. 400614

SAMPLE QUESTIONS

Third Year B. Pharm. Sem-VI

PHARMACEUTICAL CHEMISTRY I - CBSGS SYLLABUS

Q.1 Mito Q is example of which following class?

- a) Tunelling molecules
- b) Membrane tethers
- c) Monesin A
- d) Killer nanotubules

Q. 2 Carboxylate ion can act as...

- a) Strong hydrogen bond acceptor
- b) Strong hydrogen bond donor
- c) Weak hydrogen acceptor
- d) Weak hydrogen bond donor

Q.3 Which one of the following exhibit strongest intermolecular force?

- a) Hydrogen bond
- b) Ionic bond
- c) Dipole-dipole
- d) Van der walls

Q.4 Which one of the following drug is example of non-nucleoside reverse transcriptase inhibitor?

- a) Nevirapine
- b) Zudovidine
- c) Lamvudine
- d) Didanosine

Q.5 Which one of the following agent inhibit tubulin polymerization?

- a) Chochicine
- b) Vincristine
- c) Vinblastine
- d) Paclitaxel

Q.6 GPCR is also called as...

- a) 7-TM receptors
- b) 5- TM receptors
- c) 3-TM rec2ptors
- d) 2-TM receptors

Q.7.Desiprmine belongs to which following class?

- a) Tricyclic antidepressant
- b) Anticancer
- c) Antifungal
- d) Antidiabetic

Q.8 Which one of the following drug obtained from African toad frog?

- a) Polymixin B
- b) Teicoplanin.
- c) Magainin
- d) Nigericin

Q.9 Which one of the following drug is example of sesquiterpene lactone?

- a) Pyrimethamine
- b) Artemisinin
- c) Mefloquine
- d) Chloroquine

Q.10: Which one of the following drug is DHFR inhibitor?

- a) Pyrimethamine
- b) Primaquine
- c) Chloroquine
- d) Quinidine

Q.11 Name the β -lactam anti-infective agent possessing monocyclic β -lactam ring .

- a) Ampicillin
- b) Cefamandole
- c) Aztreonam
- d) Theinamycin

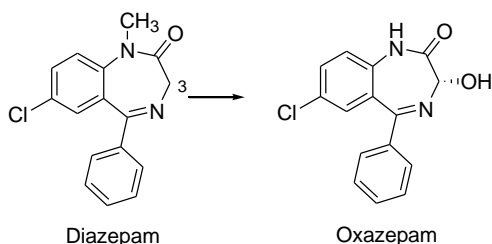
Q.12: Bacampicillin is prodrug of –

- a) Amoxicillin
- b) Oxacillin
- c) Methicillin
- d) Ampicillin

Q.13 Which of the following groups make cephalosporins unstable in vivo?

- a) C-3 acetoxy
- b) C-2 carboxyl
- c) C-7 amino acyl
- d) C-5 sulphur

Q.14 Following metabolism is carried out by which of the metabolic reaction



- a) Hydroxylation at C α -to CO and N-demethylation
- b) Hydroxylation at C β -to CO and N-demethylation
- c) Hydroxylation at electron rich phenyl ring and N-demethylation
- d) Hydroxylation at electron deficient ring and N-demethylation

Q.15 Which of the following drugs targets DNA by intercalation mechanism?

- a) Azithromycin
- b) Actinomycin D
- c) Ampicillin
- d) Bleomycin

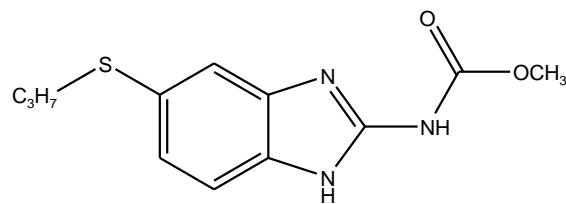
Q.16 Arabinosyl transferase enzyme is inhibited by -

- a) Isoniazid
- b) Ethambutol
- c) Pyrazinamide
- d) Streptomycin

Q.17 Which of the following drugs act by inhibition of cytochrome P-450 that catalyzes 14- α -demethylation of lanosterol to ergosterol.

- a) Griseofulvin
- b) Fluconazole
- c) Tolnaftate
- d) Amphotericin B

Q.18 Identify correct IUPAC name for following structure.



- a) Methyl -5-benzoyl-2-benzimidazolecarbamate
- b) 2-(4-Thiazolyl) benzimidazole
- c) Methyl- 5-(propylthio)-2-benzimidazolecarbamate
- d) Methyl- 6-benzoyl-2-benzimidazolecarbamate

Q. 19 Following are the enantiomeric pairs having different biological activity.

- a) Dextrorphan, levorphanol
- b) Cis-Diethylstilbesterol, trans- Diethylstilbesterol
- c) (S) Ketamine, (R) Ketamine
- d) (S) Methyl DOPA, (R) MethylDOPA

Q.20 The most phototoxic fluoroquinolone is

- a) Ciprofloxacin
- b) Norfloxacin
- c) Lomefloxacin
- d) Sparfloxacin

Q.21 Which of the following drug is synthesized using 3-chloro-4-fluoroaniline and ethyl ethoxymethylenmalonate as starting compounds

- a) Ciprofloxacin
- b) Norfloxacin
- c) Lomefloxacin
- d) Sparfloxacin

Q. 22 Which of the following enzyme Rifampin inhibits?

- a) RNA dependent DNA polymerase
- b) DNA dependent RNA polymerase
- c) Topoisomerase IV
- d) DNA gyrase

Q.23 Sulphacetamide is used as anti-bacterial agent in the treatment of

- a) Ulcerative colitis
- b) Burns
- c) Eye infection
- d) Respiratory tract infection

Q.24 Which of the following is phase II metabolic reaction?

- a) N-dealkylation
- b) Amino acid conjugation
- c) Desulfuration
- d) Oxidative deamination

Q. 25 Which of the following is β -lactam drug is β -lactamase inhibitor ?

- a) Penicillin G
- b) Ampicillin
- c) Sulbactam
- d) Penicillin V

