

Bharati Vidyapeeth's College of Pharmacy

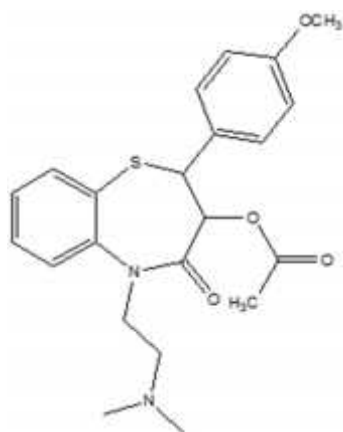
Sector-8, CBD Belapur, Navi Mumbai. 400614

SAMPLE QUESTIONS

Final Year B. Pharm.Sem-VII

PHARMACEUTICAL CHEMISTRY III - CBSGS SYLLABUS

Q.1. What is the IUPAC name of the following drug?

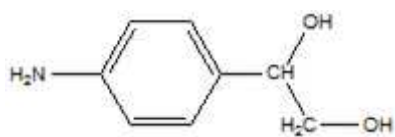


- a) 5-(acetoxymethyl)-3-[2-(dimethylamino) ethyl]-2,3-dihydro-2-(4-methoxyphenyl) -1,5-benzothiazepin-4(5H)-one
- b) 3-(acetoxymethyl)-5-[2-(dimethylamino) methyl]-2,3-dihydro-2-(4-methoxyphenyl) -1,4-benzothiazepin-4(5H)-one
- c) 3-(acetoxymethyl)-5-[2-(dimethylamino) ethyl]-2,3-dihydro-1,5-benzothiazepin-4(5H)-one
- d) 3-(acetoxymethyl)-5-[2-(dimethylamino) ethyl]-2,3-dihydro-2-(4-methoxyphenyl) -1,5-benzothiazepin-4(5H)-one

Q. 2 Losartan can be classified as

- a) Angiotensin Converting enzyme inhibitor
- b) Angiotensin II receptor blocker
- c) Renin inhibitor
- d) K channel opener

Q. 3 Following starting materials will be used for synthesis of which drug?

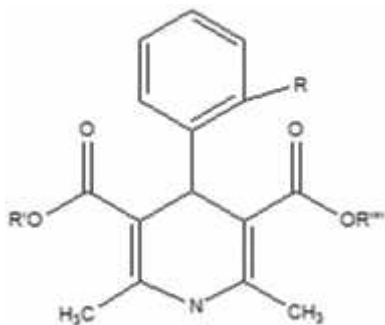


- a) Prazosin
- b) Spironolactone
- c) Sotalol
- d) Captopril

Q. 4 Which of the following drug is nonselective β blocker

- a) Propranolol
- b) Acebutolol
- c) Esmolol
- d) Terazosin

Q. 5 with respect to the following general structure which is the appropriate statement?



- a) R' and R'' must be identical for optimum activity
- b) R must be at ortho or meta position for optimum activity
- c) R must be at para position for optimum activity
- d) conversion of 1,4-dihydro pyridine ring to pyridine ring increases activity

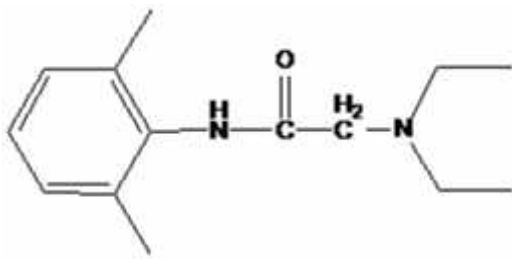
Q. 6 Diuretic containing phenoxy acetic acid scaffold is

- a) Acetazolamide
- b) Amiloride
- c) Mannitol
- d) ethacrynic acid

Q. 7 Which of the following is a fibrate prodrug?

- a) Gemfibrozil
- b) Ciprofibrate
- c) Clofibrate
- d) Carvedilol

Q. 8 Following antiarrhythmic drug will be classified under which class?



- a) Class I A
- b) Class I B
- c) Class I C
- d) Class II

Q. 9 Which of the following two drugs require hydrolysis for metabolic activation?

- a) Lovastatin and Simvastatin
- b) Lovastatin and Atorvastatin
- c) Simvastatin and Rosuvastatin
- d) Atorvastatin and Rosuvastatin

Q. 10 Which of the following Anticoagulant is Indanedione derivative? (**CBSGS**)

- a) Aspirin
- b) Cilostazol
- c) Abciximab
- d) Phenindione

Q. 11 Which of the following anti-arrhythmic drug prevents peripheral conversion of T4 to T3?

- a) Propafenone
- b) Amiodarone
- c) Mexiletine
- d) Lidocaine

Q. 12 Which of the following drugs have been developed from benzyl succinic acid?

- a) Captopril
- b) Candesartan
- c) Aliskiren
- d) Eplerenone

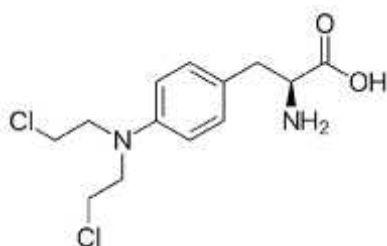
Q. 13 Which of the following is irreversible COX -1 inhibitor (**CBSGS**)

- a) Indobufen
- b) Aspirin
- c) Clopidogrel
- d) Fibrinogen

Q. 14 All drugs are alkylating agents except..

- a) Busulfan
- b) Cyclophosphamide
- c) Chloramducil
- d) Methotrexate

Q.15 IUPAC name of this drug is..



- a) 2-amino-3-{4-[bis(2-chloroethyl)amino]phenyl} propanoic acid
- b) 1-amino-3-{4-[bis(2-chloroethyl)amino]phenyl} propanoic acid
- c) 2-amino-3-{4-[bis(2-chloroethyl)amino]phenyl} ethanoic acid
- d) 2-amino-3-{4-[(2-chloroethyl)amino]phenyl} propanoic acid

Q.16 Active metabolite of 6-Thioguanine is ..

- a) 6-Thioinosinic acid
- b) 6-Thioguanilyc acid
- c) 4-Thioguanilyc acid
- d) 4-Thioinosinic acid

Q.17 Which starting material is used for the synthesis of Chlorambucil?

- a) Benzanilide and phthalic anhydride
- b) Benzanilide and succinic anhydride
- c) Acetanilide and succinic anhydride
- d) Acetanilide and phthalic anhydride

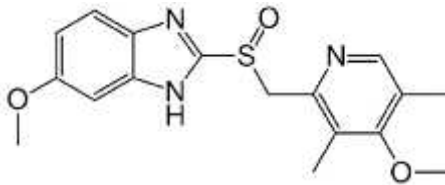
Q.18 Select 1st generation antihistaminic agent.

- a) Cetirizine
- b) Levocetirizine
- c) Promethazine
- d) Fexofenadine

Q.19 Which sentence is wrong with reference to SAR of 1st generation antihistaminics?

- a) Two aromatic rings are essential connected to central carbon, nitrogen or carbon-oxygen
- b) Spacer between amino terminal amino nitrogen and central carbon atom should be 2-3 carbon atoms
- c) Amine is substituted with small alkyl groups.
- d) Potency of terminal amino nitrogen is –primary > secondary > tertiary

Q.20 What is the name of this drug?



- a) Omeprazole
- b) Rabeprazole
- c) Pentoprazole
- d) Ranitidine

Q.21is an oxidative metabolite of Terfenadine

- a) Fexofenadine
- b) Loratidine
- c) Cetirizine
- d) Ebastine

Q.22 Which is a second generation sulfonylurea?

- a) Tolbutamide
- b) Glipizide
- c) Chlorpropamide
- d) Acetohexamide

Q.23 Thiazolidinediones are...

- a) PPAR-gamma antagonist
- b) GLP-1 agonist
- c) PPAR-gamma agonist
- d) -Glucosidase inhibitors

Q.24 Select Nucleoside reverse transcriptase inhibitor.

- a) Delaviridine
- b) Nevirapine
- c) Efavirenz

d) Lamivudine

Q.25 What is the structural difference between Acyclovir and Ganciclovir?

- a) Ganciclovir contains an extra hydroxymethylene group
- b) Acyclovir contains an extra hydroxymethylene group
- c) Ganciclovir contains an extra methyl group
- d) Ganciclovir contains an extra methoxy group

ANSWER KEY

PHARMACEUTICAL CHEMISTRY-III (SEM VII) CBSGS SYLLABUS

Q. No.	Answer	Q. No.	Answer	Q. No.	Answer
1	d	10	d	19	d
2	b	11	b	20	a
3	c	12	a	21	a
4	a	13	b	22	b
5	b	14	d	23	c
6	d	15	a	24	d
7	c	16	b	25	a
8	b	17	c		
9	a	18	c		