

Bharati Vidyapeeth's College of Pharmacy

Sector-8, CBD Belapur, Navi Mumbai. 400614

SAMPLE QUESTIONS

Final Year B. Pharm. Sem-VIII

PHARMACEUTICAL CHEMISTRY-IV- CBSGS SYLLABUS

Q. 1 Write name of a drug used in absence seizure/partial tonic clinic seizure.

- a) trimethadione
- b) carbamazepine
- c) phenytoin
- d) primidone

Q. 2 Write name of a GABA prodrug

- a) tiagabine
- b) diazepam
- c) progabide
- d) mephobarbital

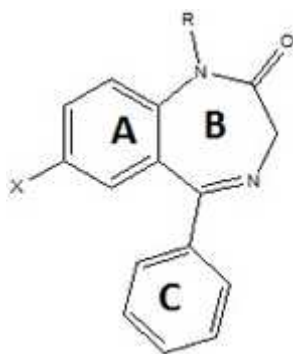
Q. 3 Anxiolytic having azaspirodecanedione scaffold

- a) Hydroxizine
- b) Meprobamate
- c) Tybamate
- d) Buspirone

Q.4 One example of mineralo-corticosteroid

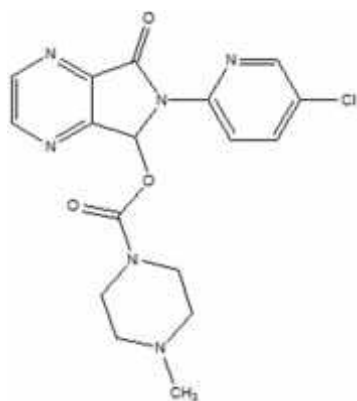
- a) betamethasone
- b) Aldosterone
- c) prednisone
- d) triamcinolone

Q. 5 With respect to the following general structure which is the correct statement?



- a) Ring C is ortho substituted with electron withdrawing group for optimum activity
- b) Ring C when para substituted increases activity
- c) Ring C must be diortho substituted with electron withdrawing group for optimum activity
- d) Ring C when ortho substituted decreases activity

Q. 6 Name and use of the following drug is..



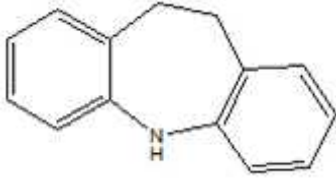
- a) Nitrazepam, Sedative hypnotic
- b) Eszopiclone, Nonbenzodiazepine sedative hypnotic
- c) Paroxetine, Antidepressant
- d) Benzotropine, Antiparkinson drug

Q. 7 Active metabolite for sulfinpyrazone is,

- a) N-dearyl
- b) Sulfide
- c) S reduction

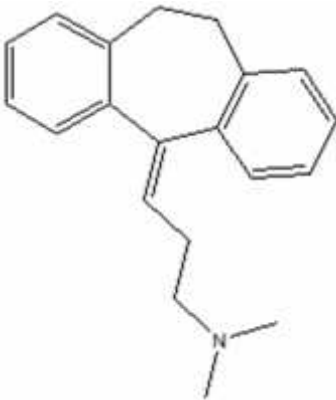
d) para hydroxy phenyl

Q. 8 Which of the drug requires following starting material for its synthesis?



- a) Imipramine
- b) Propranolol
- c) Diethylstilbestrol
- d) Nitrazepam

Q.9 Which is the correct IUPAC name for the following structure?



- a) 3-(5H-dibenzo[a,d]cyclohepten-5-ylidene)-N,N-dimethyl propan-1-amine
- b) 3-(10,11-dihydro-5H-dibenzo[a,d]cyclohepten)-N,N-dimethyl propan-1-amine
- c) 3-(10,11-dihydro-cyclohepten-5-ylidene)-N,N-dimethyl propan-1-amine
- d) 3-(10,11-dihydro-5H-dibenzo[a,d]cyclohepten-5-ylidene)-N,N-dimethyl propan-1-amine

Q. 10 Mode of action of allopurinol is

- a) increase in uric acid formation
- b) decrease in uric acid secretion
- c) increase in uric acid secretion

d) decrease in uric acid formation

Q. 11 Nortryptiline is

a) SSRI

b) NSRI

c) SNRI

d) GABA mimetic

Q. 12 Which is the selective, reversible MAO inhibitor

a) Procyclidine

b) Selegiline

c) Benzotropine

d) Tranylcpromine

Q. 13 Write drug from fluorobutyrophenone class

a) risperidone

b) haloperidol

c) fluoxetine

d) amoxapine

Q. 14 Which amino acid is required for the biosynthesis of Norepinephrine?

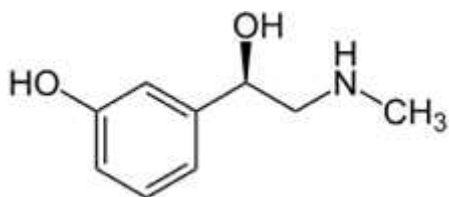
a) D-Tyrosine

b) L-Phenylalanine

c) D-Phenylalanine

d) L-Tyrosine

Q.15 Select IUPAC name of the following structure



- a) 3-[(1R)-1-hydroxy-2-(methylamino)ethyl]phenol
- b) 3-[(1S)-1-hydroxy-2-(methylamino)ethyl]phenol
- c) 3-[(1R)-2-hydroxy-1-(methylamino)ethyl]phenol
- d) 3-[(1R)-1-hydroxy-2-(methylamino)methyl]phenol

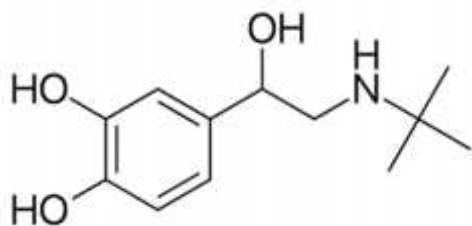
Q.16 Norepinephrine is metabolized by

- a) Carboxylase
- b) COMT and MAO
- c) DAO
- d) Reductase and carboxylase

Q.17 In SAR of adrenergic drugs in general, a primary or secondary aliphatic amine separated by how many carbons from a substituted benzene?

- a) Three carbon atoms
- b) One carbon atom
- c) Two carbon atoms
- d) Four carbon atoms

Q.18 What is the category of this drug?



- a) 2-Adrenergic agonist
- b) 2-Adrenergic antagonist
- c) 2-Adrenergic agonist
- d) 2-Adrenergic antagonist

Q. 19 Nicotinic receptor is a type of....

- a) GPCR
- b) Kinase receptor
- c) Nuclear receptor
- d) Ion channel receptor

Q.20 Starting material used for synthesis of Neostigmine is...

- a) 2-Dimethylamino phenol and N-dimethyl carbamoyl chloride
- b) 3-Diethylamino phenol and N-dimethyl carbamoyl chloride
- c) 3-Dimethylamino phenol and N-dimethyl carbamoyl chloride
- d) 3-Dimethylamino phenol and N-diethyl carbamoyl chloride

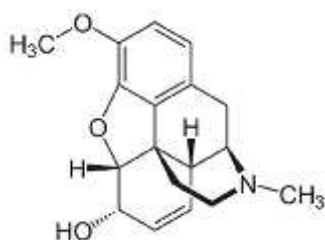
Q.21 Which is an example of lactone?

- a) Carbachol
- b) Pilocarpine
- c) Methacholine
- d) Bethanechol

Q. 22 Which Acetylcholinesterase inhibitor used for the treatment of Alzheimer disease?

- a) Edrophonium chloride
- b) Neostigmine
- c) Physostigmine
- d) Tacrine

Q.23 Identify the name of drug.,



- a) Morphine
- b) Codeine
- c) Buprenorphine
- d) Pentazocin

Q. 24 1-(4-chlorobenzoyl)-5-methoxy-2-methylindole-3-acetic acid- This is an IPUAC name of which drug?

- a) Indomethacin
- b) Sulindac
- c) Diclofenac
- d) Piroxicam

Q. 25 Which of the following is not a metabolite of Diclofenac?

- a) 3' Hydroxy
- b) 4' Hydroxyl
- c) 2' Hydroxy
- d) 4',5 Dihydroxy

ANSWER KEY

PHARMACEUTICAL CHEMISTRY-III (SEM VIII) CBCS SYLLABUS

Q. No.	Answer	Q. No.	Answer	Q. No.	Answer
1	a	10	a	19	d
2	c	11	c	20	c
3	d	12	b	21	b
4	b	13	b	22	d
5	a	14	d	23	b
6	b	15	a	24	a
7	d	16	b	25	c
8	a	17	c		
9	d	18	a		