

BHARATI VIDYAPEETH'S COLLEGE OF PHARMACY

Sector-8, CBD Belapur, Navi Mumbai

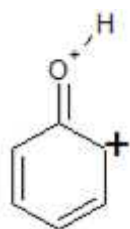
Sample Questions (MCQs)

S. Y. B. Pharm. Sem-III R-2019

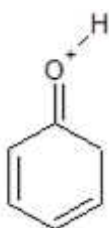
Subject: BP301T- Pharmaceutical Organic Chemistry-II (Theory)

Q. 1. Which of the following is the resonance structure of phenol?

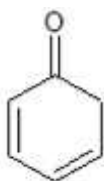
A]



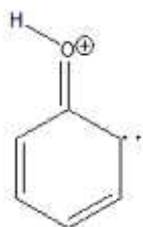
B]



C]



D]



Q. 2 What is the increasing order of acidity benzoic acid, p-nitro benzoic acid, p-methyl benzoic acid?

- A] benzoic acid < p-nitro benzoic acid < p-methyl benzoic acid
- B] p-methyl benzoic acid < benzoic acid < p-nitro benzoic acid
- C] p-methyl benzoic acid < p-nitro benzoic acid < benzoic acid
- D] p-nitro benzoic acid < p-methyl benzoic acid < benzoic acid

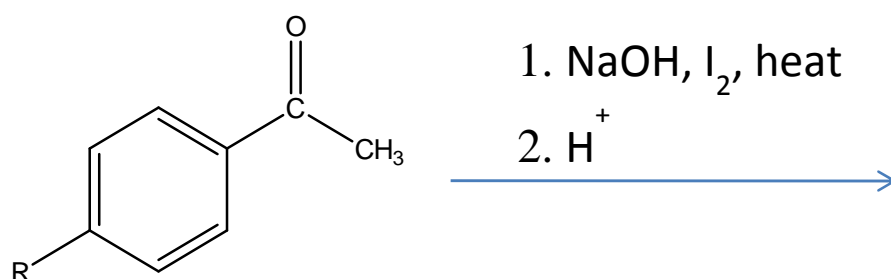
Q. 3 Which of the following will be the most basic compound?

- A] p-nitro aniline
- B] N,N-dimethyl aniline
- C] N-methyl aniline
- D] Aniline

Q.4 Acetic acid is more acidic than phenol because,

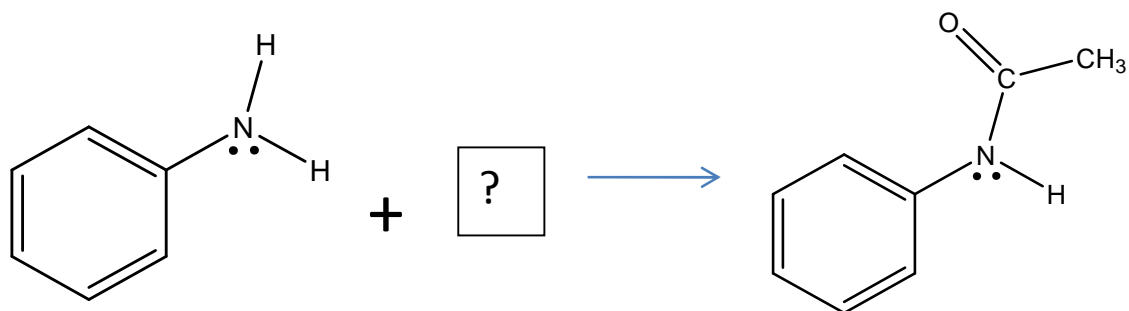
- A] Acetic acid shows symmetrical resonance structures whereas phenol does not show symmetrical resonance structures
- B] Acetic acid shows more resonance structures whereas phenol shows less resonance structures
- C] Acetic acid is water soluble whereas phenol is water insoluble
- D] Acetic acid has low molecular weight whereas phenol has high molecular weight

Q.5 Identify the product of the following reaction



- A] R substituted benzoic acid
- B] R substituted iodo benzene
- C] R substituted ethyl benzene
- D] R substituted benzene ethanol

Q.6 Identify the reactant for the following reaction



- A] ethanol
- B] ethyl chloride
- C] acetyl chloride
- D] Sulfuric acid

Q. 7 After hydrolysis of triglyceride which of the following products are formed?

- A] Glycerine
- B] Glycerol and 3 molecules of fatty acids
- C] Glycerol and two molecules of fatty acids
- D] Glyceraldehyde and three molecules of fats

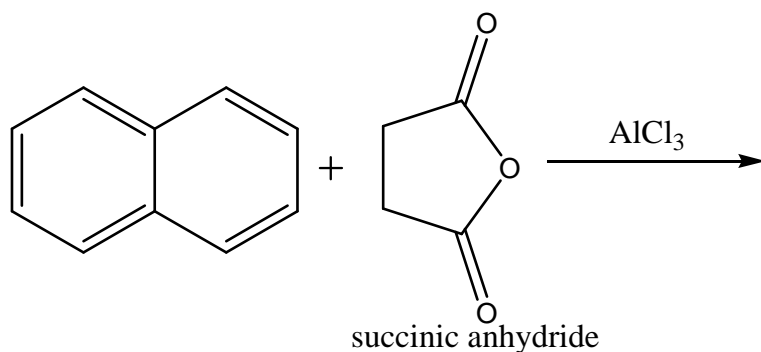
Q. 8 How many resonance structures are seen for Anthracene?

- A] 2
- B] 3
- C] 4
- D] 5

Q. 9 Which starting materials are used in Elbe's reaction

- A] O-methyl acetophenone
- B] P-methyl acetophenone
- C] O-methyl benzophenone
- D] P-methyl benzophenone

Q.10 Identify the product for the following reaction



- A] Benzene
- B] Naphthalene
- C] Anthracene
- D] Phenanthrene

Q. 11 Which of the following reducing agent yields 1,4-dialine from naphthalene?

- A] Sodium and ethanol
- B] Sodium and isopropanol
- C] Sodium and isopentanol
- D] Hydrogen and Platinum

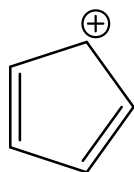
Q. 12 Which of the following is obtained after complete hydrogenation of Fatty acid?

- A] Partially saturated fatty acid
- B] Fully saturated fatty acid
- C] Completely unsaturated fatty acid
- D] Completely saturated glicerol

Q.13 Mg of KOH required to neutralise free fatty acid from 1 gm of oil is known as

- A] Acid value
- B] Saponification value
- C] Acetyl value
- D] Iodine number

Q. 14 The given compound is



- A] Aromatic
- B] Anti-aromatic
- C] Non aromatic
- D] Aliphatic

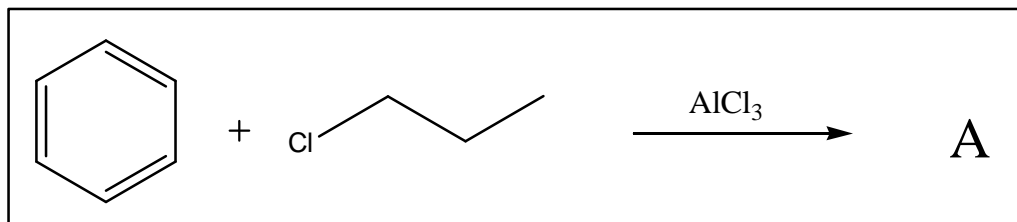
Q. 15 The following given reactions are electrophilic aromatic substitution reactions except...

- A] Nitration
- B] Chlorination
- C] Reduction
- D] Sulphonation

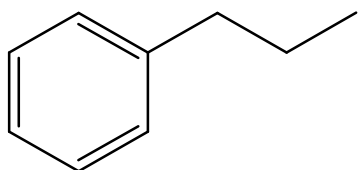
Q. 16 Identify the meta director group from the following given examples

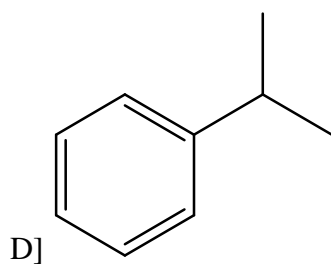
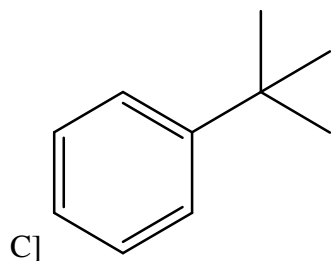
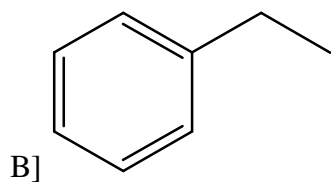
- A] CHO
- B] CH₃
- C] OH
- D] OC₂H₅

Q. 17 Identify the compound A in the given reaction

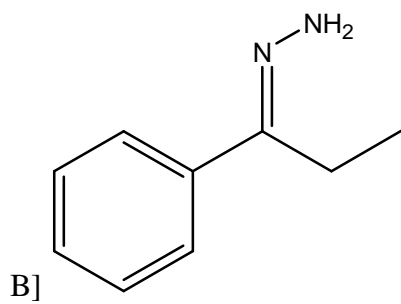
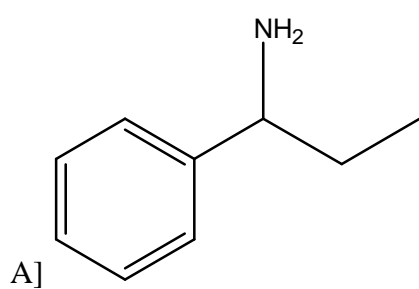
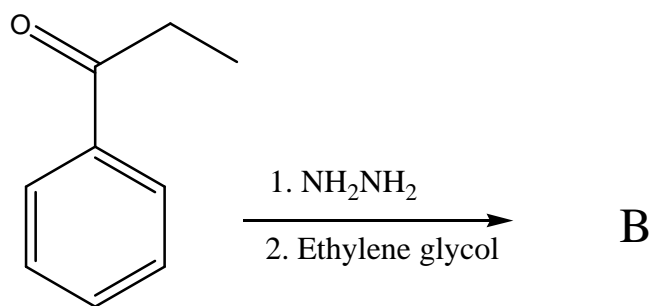


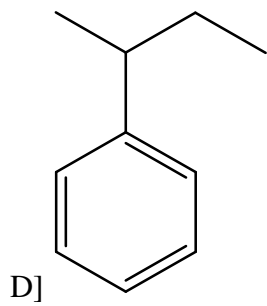
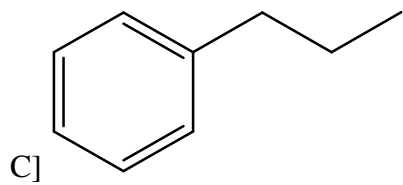
A]



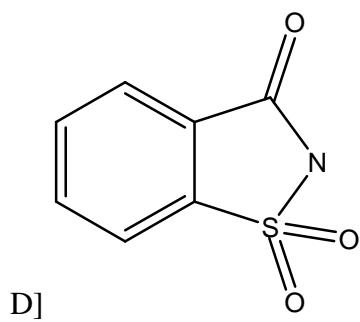
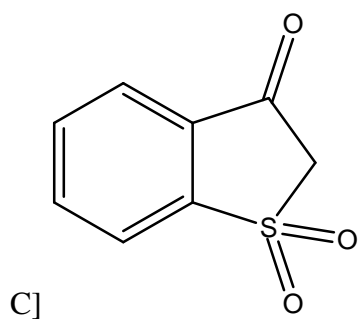
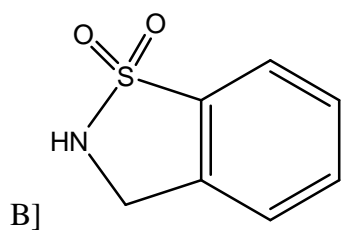
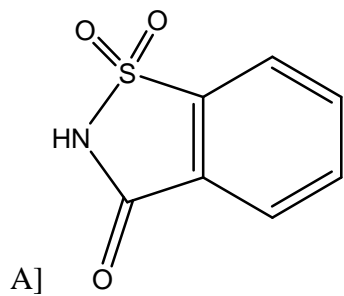


Q. 18 Identify the product B in the following reaction





Q. 19 Select correct structure of Saccharin



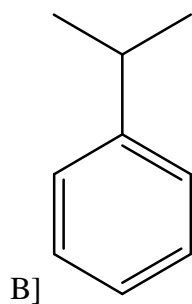
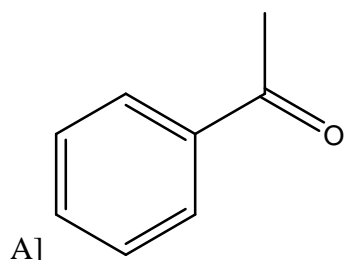
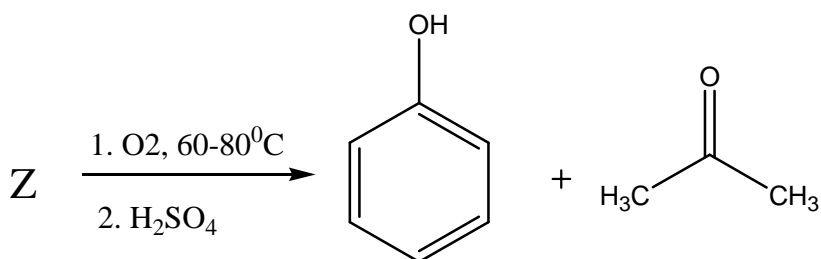
Q. 20 Select most acidic compound

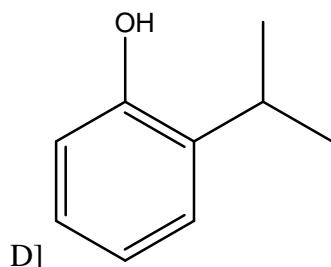
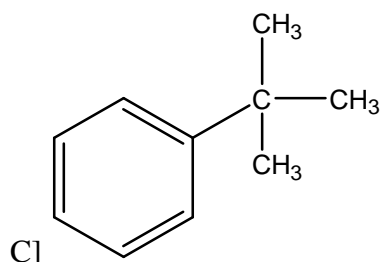
- A] 2, 4-dinitrophenol
- B] 4-Chloro phenol
- C] Phenol
- D] 2, 4, 6-trinitrophenol

Q.21 What is Reimer Tiemann reaction?

- A] Conversion of resorcinol to 2-hydroxy benzaldehyde
- B] Conversion of phenol to 2-hydroxy benzaldehyde
- C] Conversion of phenol to 3-hydroxy benzaldehyde
- D] Conversion of phenol to Salicylic acid

Q.22 Identify the compound Z in the given reaction





Q.23 The strain caused by eclipsing interactions is known as

- A] Angle strain
- B] Steric strain
- C] Baeyer's strain
- D] Torsional strain

Q.24 Select the correct statement for the stability of cyclohexane

- A]Boat conformation of cyclohexane is more stable than chair conformation
- B] Both chair and boat conformations of cyclohexane are equally stable
- C] Chair conformation of cyclohexane is more stable than the boat conformation
- D] In the boat conformation, the adjacent C – H bonds on all the neighbouring carbon atoms are staggered.

Q. 25 Select the wrong statement for Baeyer's theory

- A] All ring systems are planer
- B] The large ring system do not exist due to positive strain
- C] Any deviation from ideal bond angle value produces strain in a molecule
- D] Cyclopropane and cyclobutane undergo ring opening reactions easily due to higher angle strain